

AURORA

Wear resistance



Chipping resistance



Edge material: M42 + TiN coating

Hardness : Hv 950 (Film : Hv 2300)

Highest grade bi-metal blade with Amada's original TiN coating. Ideal blade for hard-to-cut material which has both toughness and wear resistance.

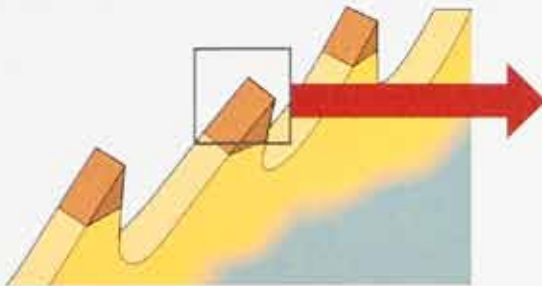
Applicability

Break-in area / 1000 cm²

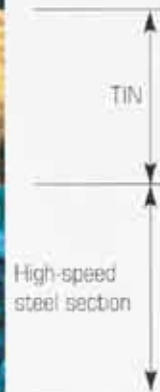
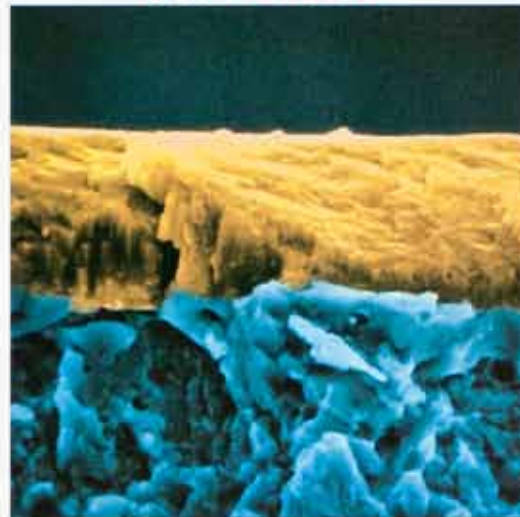
Mild steel, Non-ferrous metal			Tool steel, Prehardened steel			Hot work die steel, Stainless steel			Super heat resisting alloy		
Small ~100 mm	Medium 100-400 mm	Large 400 mm	Small ~100 mm	Medium 100-400 mm	Large 400 mm	Small ~100 mm	Medium 100-400 mm	Large 400 mm	Small ~100 mm	Medium 100-400 mm	Large 400 mm
<ul style="list-style-type: none"> • 50, 55, A, B, C, D • 1005-1095, 1513-1536 • 1541-1572 • 5015-5150 • 4118-4161 • 1330-1345 • 3115-3315 • 4012-4047, 4419, 4422, 4427 • 4615-4626, 4815-4820 • 4320-4720, 8115-9430 • 1108-1215 • 1100-7075 • C10200, C12000, C21000 			<ul style="list-style-type: none"> • W-1, W-2, W-5 • P-2, P-3, P-4, P-5, P-6, P-20, P-21 • S-1, S-2, S-4, S-5, S-6, S-7 • L-2, L-6 • 5155, 5160 • A-2, 0-1, 0-2, 0-6, D-2, D-3, CPM 10V • T-1, T-2, T-3, T-4, M-1, M-2, M-5, M15 • 50100, 51100, 52100 			<ul style="list-style-type: none"> • H-10, H-13, H-21, H-22, H-24, H-25 • 210, 202, 302, 303, 304, 308 • 314, 316, 317, 321, 330, 347 • 410, 416, 420, 430, 440C • 15-5PH, 17-4PH, 15-7 			<ul style="list-style-type: none"> • 309, 409, 600 • MONEL, K-MONEL, INCONEL718, HASTELLOY A, B, C • A286, INCOLOY 800, RA330 • ASTROLOY WF-11 • MONEL400, K-500 • Ti-6Al-4V 		

Features

TIN coating film



Hv 2300



Doubled cutting rate, three-fold service life

2 x 3 = six-fold SAVINGS

- TIN coating of Hv.2300 hardness applied to the "SIGMA" blade greatly improved wear resistance.
- Highest adhesion strength and film quality that have not been achieved by any other manufacturer.
- As a synergistic effect of the kerf dispersed type tooth shape (cutting resistance reduced) and the high positive rake angle (cutting ability improved), high speed and long service life were attained for this highest grade bi-metal blade for hard-to-cut materials.

Line-up of products

Band width [mm]	Band thickness [mm]	Pitch			
		0.75/1	1.1/1.5	2/3	3/4
34	1.1			○	○
41	1.3			○	
54	1.6	○	○	○	
67	1.6	○	○		

Printed on recycled and recyclable paper • All specifications subject to change without notice